



**BLADE-BAR
TILT ATTACH HITCH**

Patent No. 2023903218

The Blade-Bar is the first of our productive designs being a grading, dozing, and leveling tool. Currently made for skid steers with its innovative design, a real head turner when in action with its precision angles keeping material moving while working through the frame with a smooth cutting edge finish.

Above is the 1850 wide short nose model originally designed for the L/T hitch Auto machine control. With visual blade accumulator bottom edges for stability and the range of applications from roads, drive ways, pads and much more



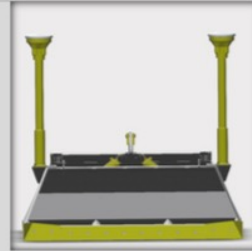
About Us

From being in the earthmoving world working with all types of materials and elements with time frames, efficiency and productivity is everything with either hourly hire to quoted jobs, now moving into attachments with our own evolutionary patent designs.

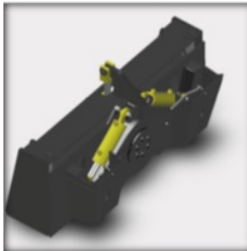
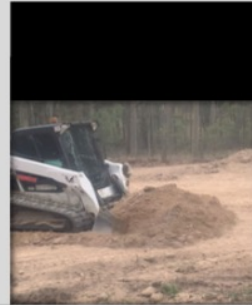
From Grading, leveling, mixing, ripping, laser and GPS guided units. Here are 3 of our products that will impress with being, versatile, productive, help operator fatigue, feel, visibility and easy to use.

Most of all the value of each of these investments to any business or land holder.

**Call us today on
0406 864 876**



**L-T Hitch/Blade-Bar
Auto Machine control**



THE L/T HITCH

Patent No. 2024900213

The L/T hitch designed to turn your skid steer into a versatile power house with a range of attachments it can buddy with /Blade bars, Skid Rips, buckets, 4in1 buckets, bucket spreader bar combo, rakes, land planes, dozer blades, for manual tilt or adding Auto machine control laser/GPS lift and tilt to your attachment of choice add next level productivity to your work load

**DBE'S
INNOVATIVE
AND VERSATILE
DESIGNED
EXPERIENCE
BUILT INTO
ATTACHMENTS**



THE SKID RIPS

Patent No. 2024900426

The skid rips have adjustable ripping depths turntable tines. Replaceable teeth chisel/or tiger. Turn tines upside down to blade or tilt forward to use front comb for finishing, rip forward and reverse tines off set to front and rear for no wasted movements of the skid steer. Bolt on bottom edge, with screen bars